

Santa Cruz Hostel Society (SCHS)

Carmelita Cottages Hostel

a.k.a. Carmelita Court

315 - 321 Main Street, Santa Cruz CA

1870's to 2010

Photo History of Renovations

Terri L.N. Fisher, Architect for Renovations

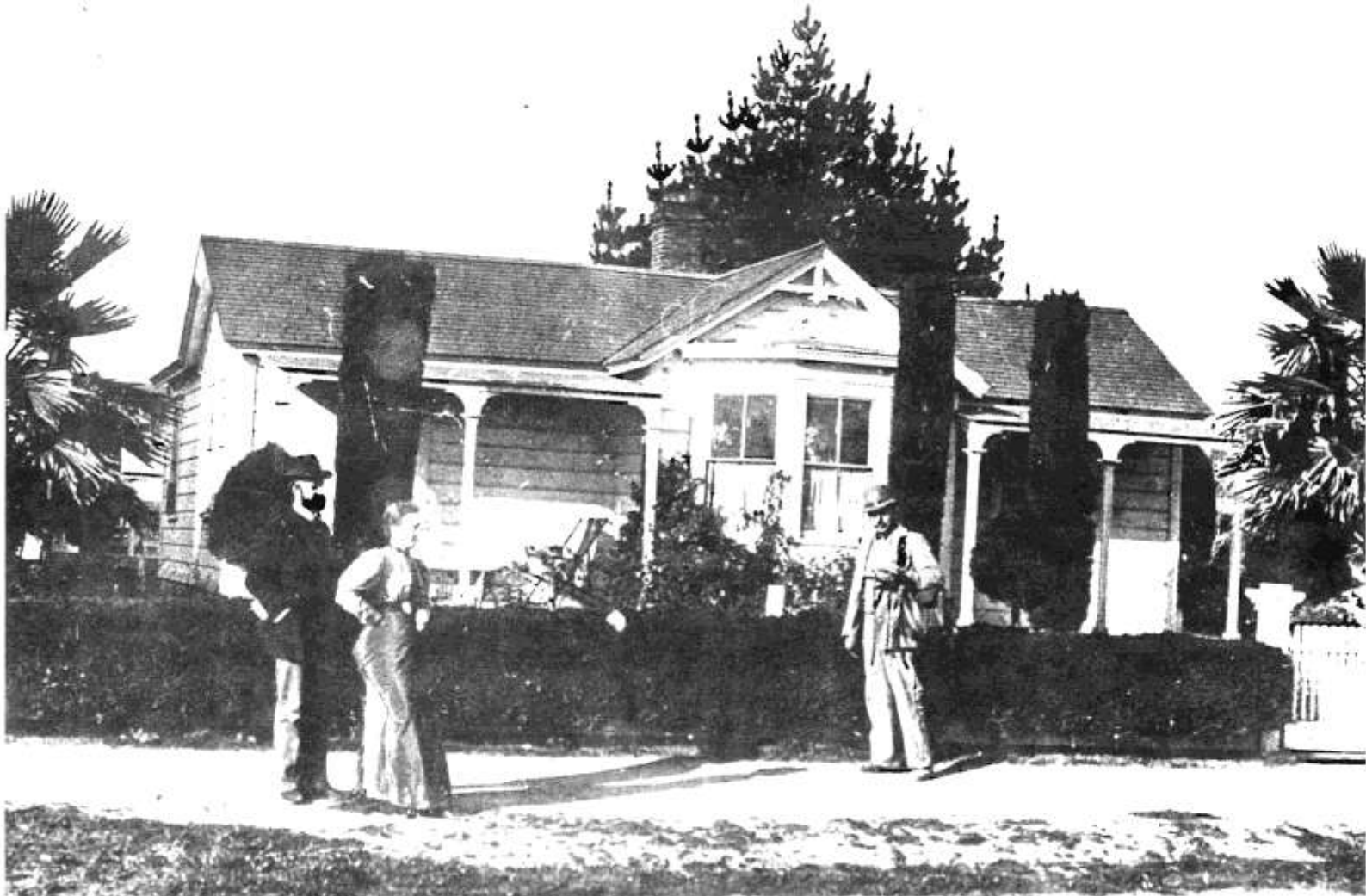


A white, semi-circular stone monument with a blue oval plaque in the center. The plaque contains white text. The top arc of the plaque reads "SANTA CRUZ COUNTY". Below that, in the center, is "ca. 1872-1910". The main title, "Carmelita Cottages", is flanked by two small white dots. Below the title, it lists the residents: "Homes of sea captain Timothy Dame, saloonkeeper Thomas V. Johnson, & opera singer J. Henry Thompson". The bottom arc of the plaque reads "HISTORICAL TRUST LANDMARK". The monument is set against a background of green trees.

SANTA CRUZ COUNTY
ca. 1872-1910
• **Carmelita Cottages** •
Homes of sea captain Timothy Dame,
saloonkeeper Thomas V. Johnson, &
opera singer J. Henry Thompson
HISTORICAL TRUST LANDMARK

**In 1986, Buildings & Trees/Plants of “Carmelita Court”
Placed on National Register of Historic Places**

Santa Cruz City – Carmelita Cottages a.k.a. Carmelita Court



315 MAIN ST, CAPTAIN DAME COTTAGE CIRCA 1880's



August 1992
Ground Breaking
For
Carmelita Cottages
Renovation

Representatives
From
SCHS,
City Parks,
City Council,
&
State Coastal
Conservancy



Captain Dame Cottage
315 Main Street
Opens as an HI-USA Hostel
After Renovation in 1993
Funded by State Coastal Conservancy



Santa Cruz Hostel Society (SCHS)
Carmelita Court
Johnson Cottage
321 A/B Main St.
Before Renovation



SCHS 1995
Johnson Cottage
After Renovation
Funded by State Coastal
Conservancy



SCHS
Johnson Cottage
Grand Opening
June 26, 1994



1995 Governor's Award for Historic Preservation



OFFICE OF THE GOVERNOR
State of California

May 1, 1995

TO: SANTA CRUZ HOSTEL SOCIETY

On behalf of the people of California, I would like to extend my sincere appreciation to all of you for the dedication and commitment you've demonstrated by working so hard to preserve and protect the 1870's era Carmelita Cottages, an invaluable piece of California history and an integral part of our collective heritage.

California's cultural and historical diversity is among its greatest assets, and, through your efforts to restore the state's treasures and educate its residents, you are bringing us all closer not only to a fuller understanding of the past but also to a clearer vision of the future.

Please accept my very best wishes for every continued success.

Sincerely,

A handwritten signature in cursive script, reading "Pete Wilson", is written in dark ink.

PETE WILSON

CA. Assemblymember
Bruce McPherson

CA. Secretary of Resources
Douglas P. Wheeler

SCHS Representative
Peter Kambas





SCHS
Captain Roberts Cottage
321-C Main Street
(left) Before Renovation

Captain Roberts Cottage
(right) After Renovation

Completed 1995
Funded by State Coastal
Conservancy





PILOT HOUSE PORCH RAIL
S/W VIEW

SCHS Pilot-Long Building 319 Main Street Before Renovation



NORTH FACADE OF PILOT HOUSE
VIEWED WITH PORCH OF LOTTIE
SLY COTTAGE AT RIGHT.



BACK VIEW, EAST FACADE OF
PILOT HOUSE ON LEFT, BACK OF
PINE COTTAGE ON RIGHT. *FALSE
FRONT* ON PILOT HOUSE MAY BE
REMAINS OF REMOVED REAR
EXTENSION.



SCHS 2003
Pilot-Long Building
After Renovation
Funded By
Hostel Income
& Public Donations

**SCHS 2003
Pilot-Long Building
Grand Opening**





ALLEY AT NORTH CORNER OF FACADE



EAST ELEVATION, FRONT. SOUTH FACADE BELOW.



PINE COTTAGE VIEWS



FRONT DOOR



LETTER BOX

SCHS
Pine Cottage
 317 Main St.
 Hostel Staff
 Residence
 Before
 Renovation



SCHS 2010
Pine Cottage
After Renovation
Funded by Hostel Income
& Public Donations



SCHS
Pine Cottage
After Renovation
2010

View from 2nd Story
Towards Main Street

HOSTELLERS CELEBRATE!
Grand Opening of Final Carmelita Cottage
On October 10, 2010

